



Sonoma Water

Clean. Reliable. Essential. Every Day.

2021 Stream Maintenance Overview

ZONE 3A FLOOD ZONE MEETING

Chase Takajo
Field Operations
Stream Maintenance Program

    sonomawater.org



Vegetation Maintenance Overview

- Abramson Creek
- Austin Creek
- Bellvue Wilfred Channel
- Brush Creek
- Coffey Creek
- Coleman Creek
- Colgan Creek
- Copeland Creek
- Crane Creek
- Ducker Creek
- Five Creek
- Gossage Creek
- Hinebaugh Creek
- Irwin Creek
- Jensen Creek
- Kawana Creek
- Laguna de Santa Rosa
- Middle Brush Creek
- Paulin Creek
- Piner Creek
- Piner Creek Reservoir
- Rincion Creek
- Roseland Creek
- Russell Creek
- Santa Rosa Creek
- Sierra Park Creek
- Spring Creek
- Todd Creek
- Wilfred Creek
- TOTAL: 3,220 CY of Vegetation Removed



Trash Removal

- Employ 2 full-time security guards to patrol Sonoma Water Property
- 59 days dedicated to Creek clean up
- 63,020 lbs. of trash removed

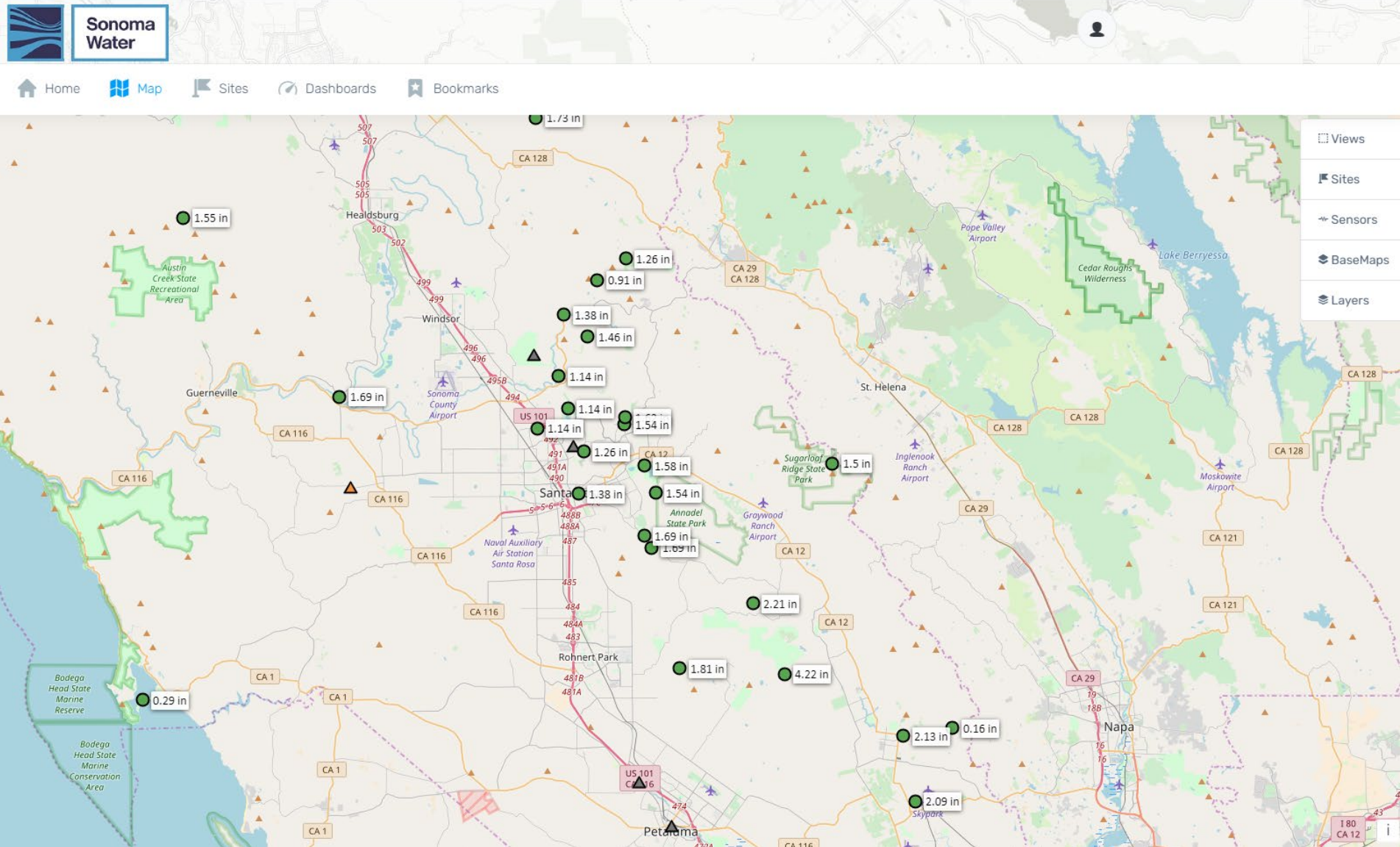


Bank Repair: Middle Brush Creek



Sonoma
Water

Sonoma OneRain System



October Atmospheric River

- Matanzas Reservoir
 - Peak 24-hr rainfall was 8.63 inches
 - NOAA Atlas 14 100-yr, 24-hr event is 8.47 inches.
- Spring Lake
 - Peak 24-hr rainfall was 8.00 inches
 - NOAA Atlas 14 200-yr, 24-hr event is 7.56 inches.
The 500-yr, 24-hr event is 8.25 inches.
- Middle Fork Brush Creek Dam
 - Peak 24-hr rainfall was 8.75 inches
 - NOAA Atlas 14 200-yr, 24-hr event is 8.26 inches.
The 500-yr, 24-hr event is 9.03 inches.



QUESTIONS?



Sonoma
Water



**Sonoma
Water**